

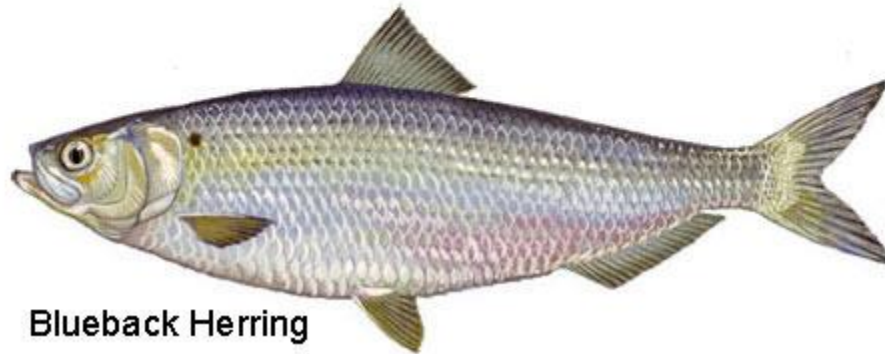


IPSWICH RIVER
WATERSHED ASSOCIATION
The Voice of the River

RIVER HERRING AND THE RESTORATION OF THE IPSWICH RIVER



Alewife



Blueback Herring

Source: U.S. Fish and Wildlife Service

MIGRATORY FISH IN THE IPSWICH RIVER

- River Herring
 - Alewife
 - Blueback
- American Shad
- Rainbow Smelt
- American Eel
- Sea Lamprey
- Atlantic Salmon*
- Atlantic and Shortnose Sturgeon*



*Disappeared by the 1800's

Major Dams

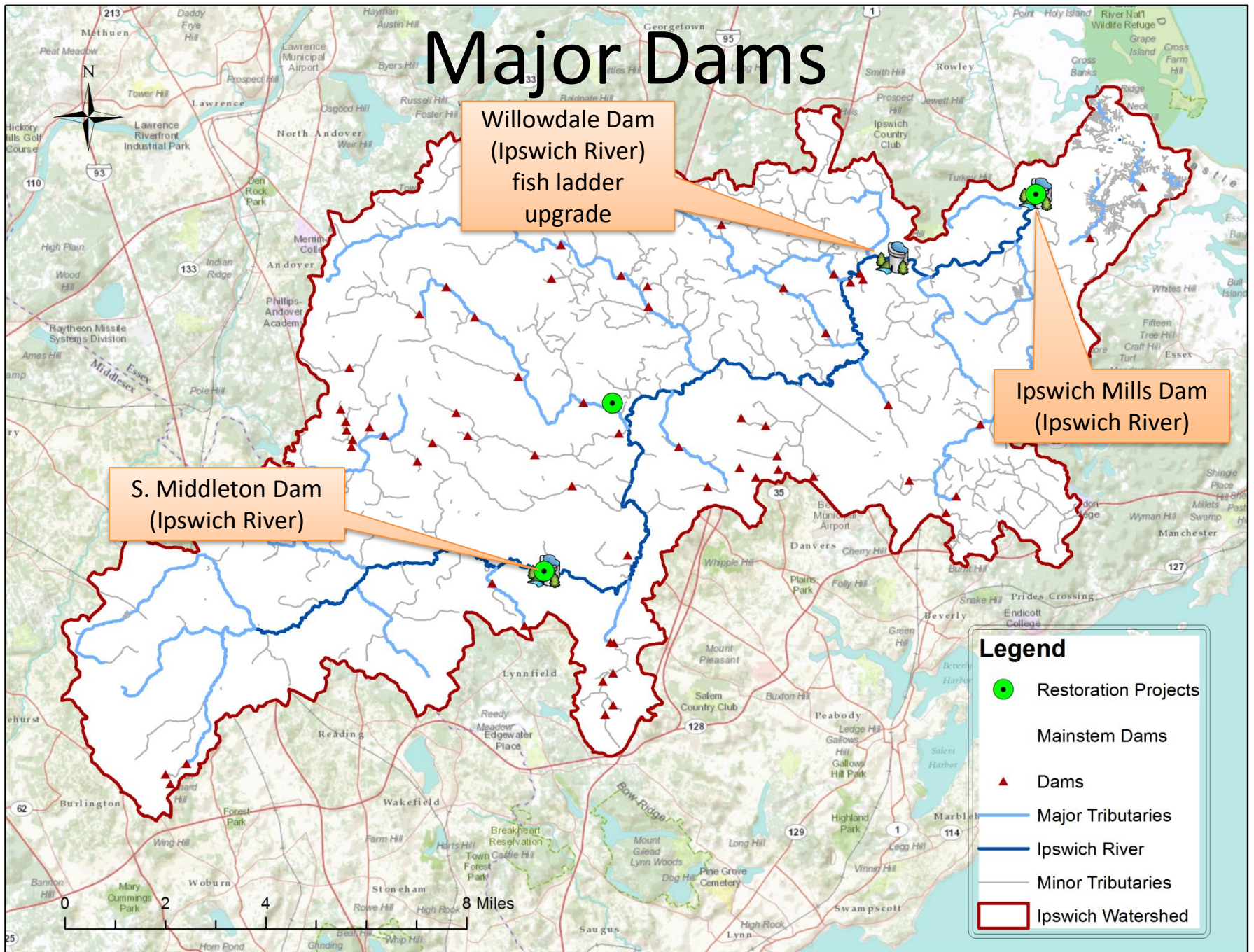
Willowdale Dam
(Ipswich River)
fish ladder
upgrade

Ipswich Mills Dam
(Ipswich River)

S. Middleton Dam
(Ipswich River)

Legend

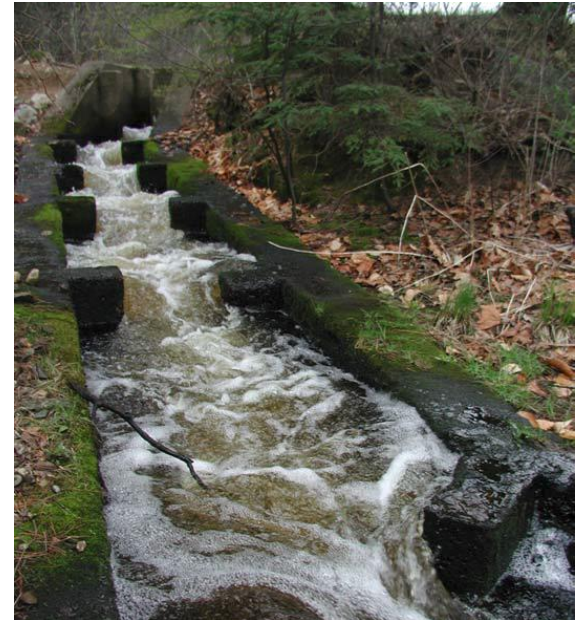
- Restoration Projects
- Mainstem Dams
- ▲ Dams
- Major Tributaries
- Ipswich River
- Minor Tributaries
- Ipswich Watershed



Ipswich Mills Dam

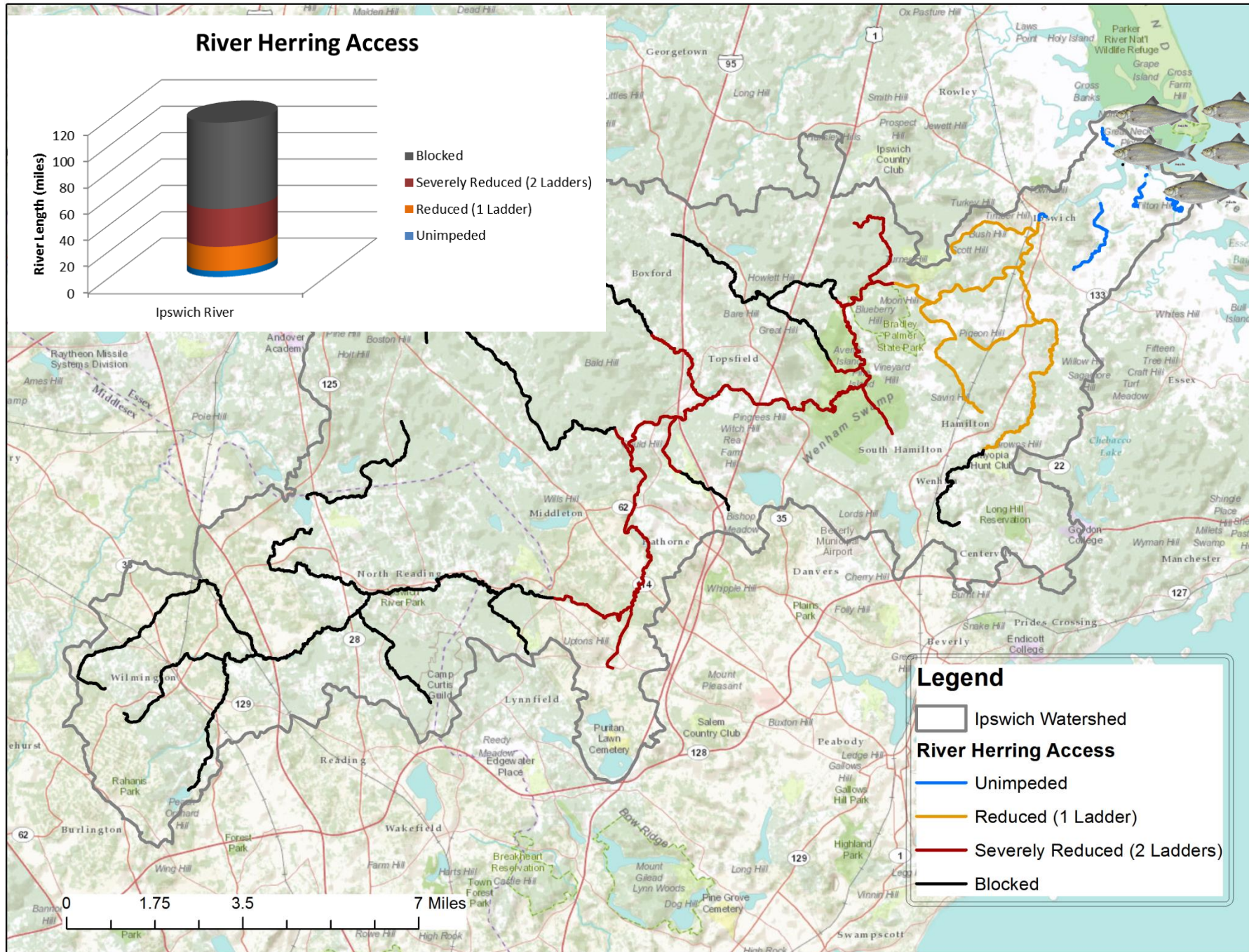
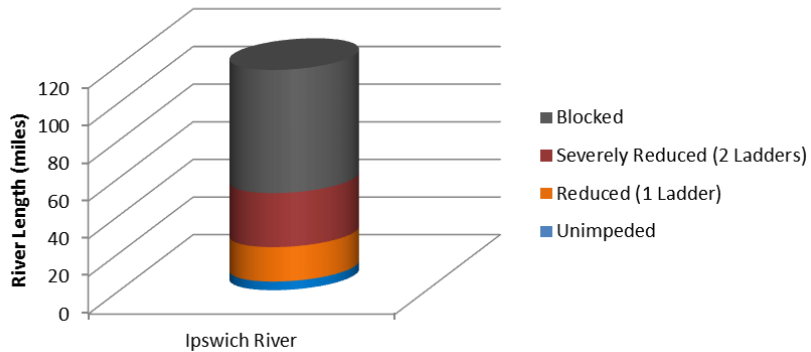


Willowdale Dam



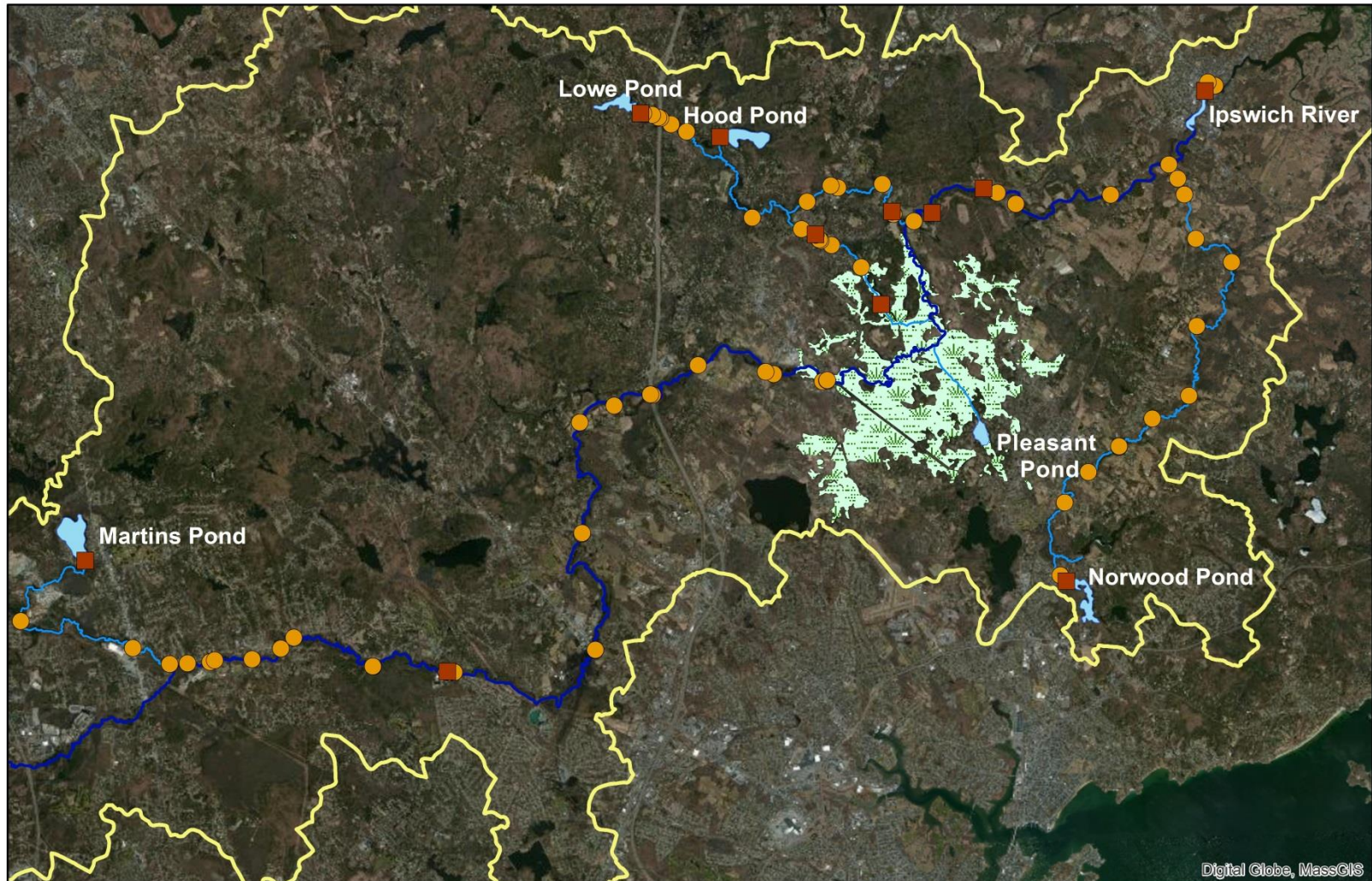
South Middleton
Dam (no fish
passage)

River Herring Access



Potential Herring Spawning Sites in the Ipswich River Watershed

Author: Kristen Thiebault 3/1/18



Legend

- Ipswich River
- Tributaries
- Lakes and Ponds
- Watershed Boundry

Barriers

- Dams
- Crossings

Potential Spawning Sites

- Lakes and Ponds
- Wenham Swamp

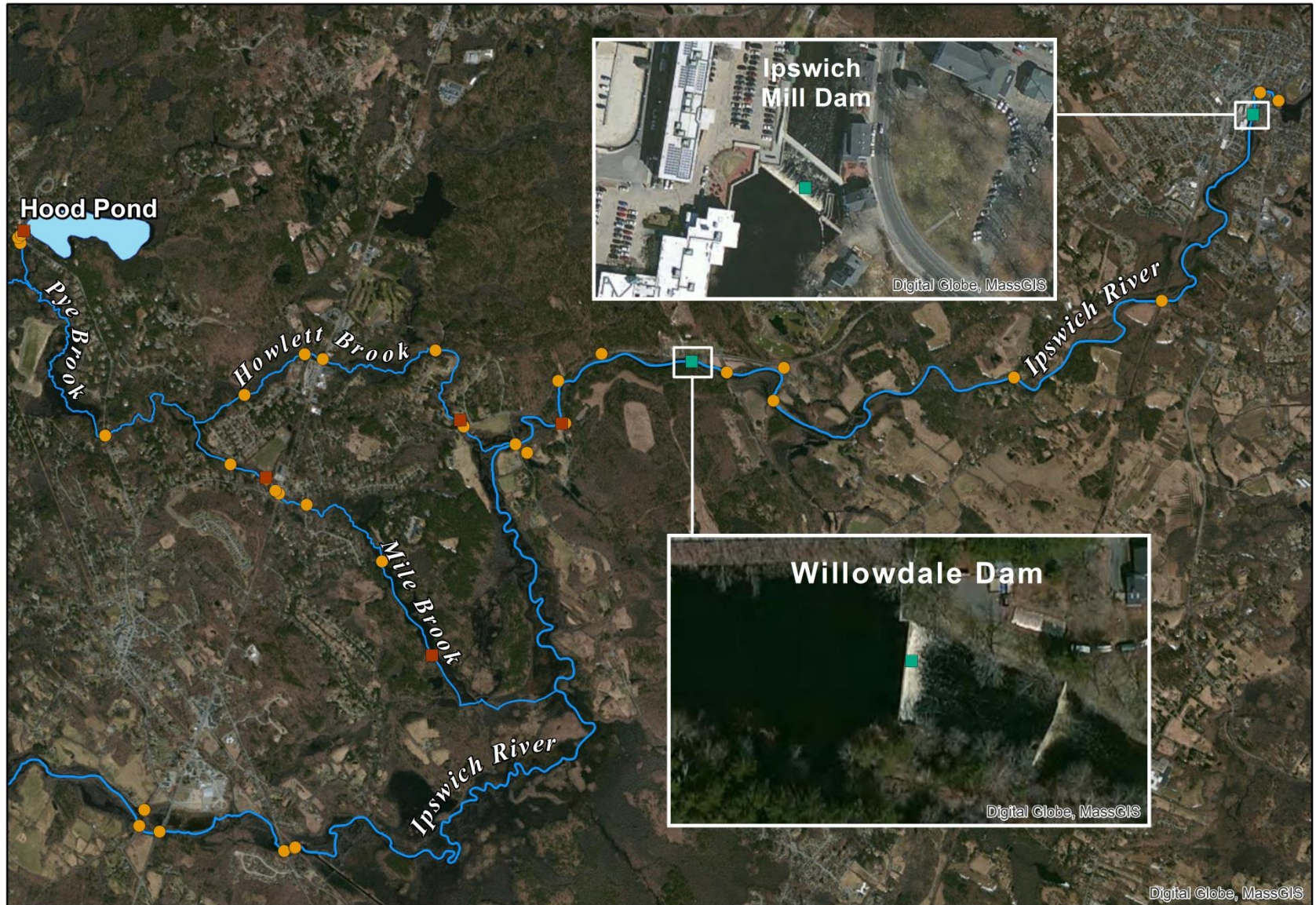
0 2.5 5 Miles



Sources: Mass GIS and Mass DEP

From Hood Pond to Ipswich River

Author: Kristen Thiebault 3/1/18



Barrier Type

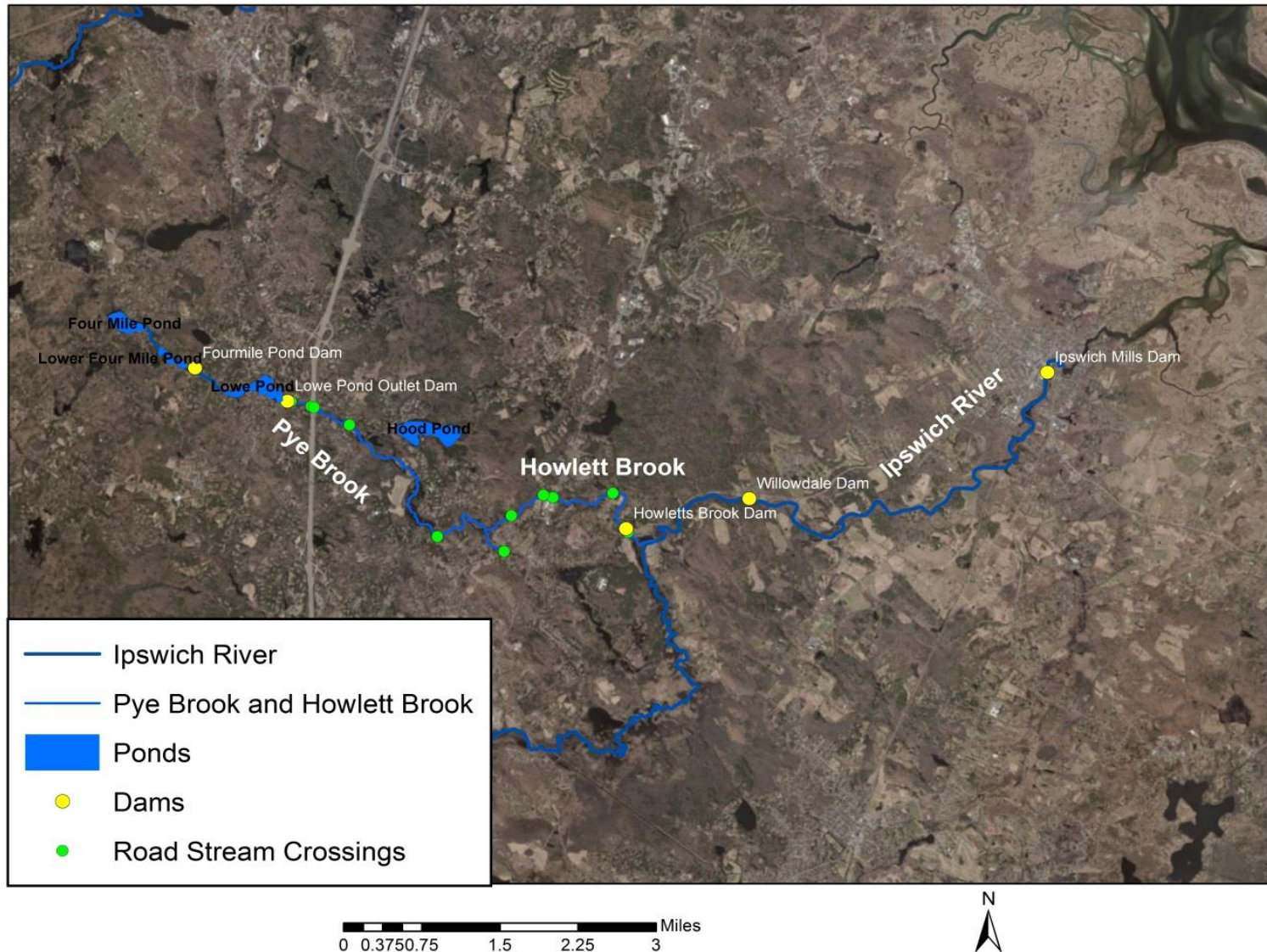
- Dams without Fish Ladders
- Dams with Fish Ladders
- Crossings

0 1 2 Miles



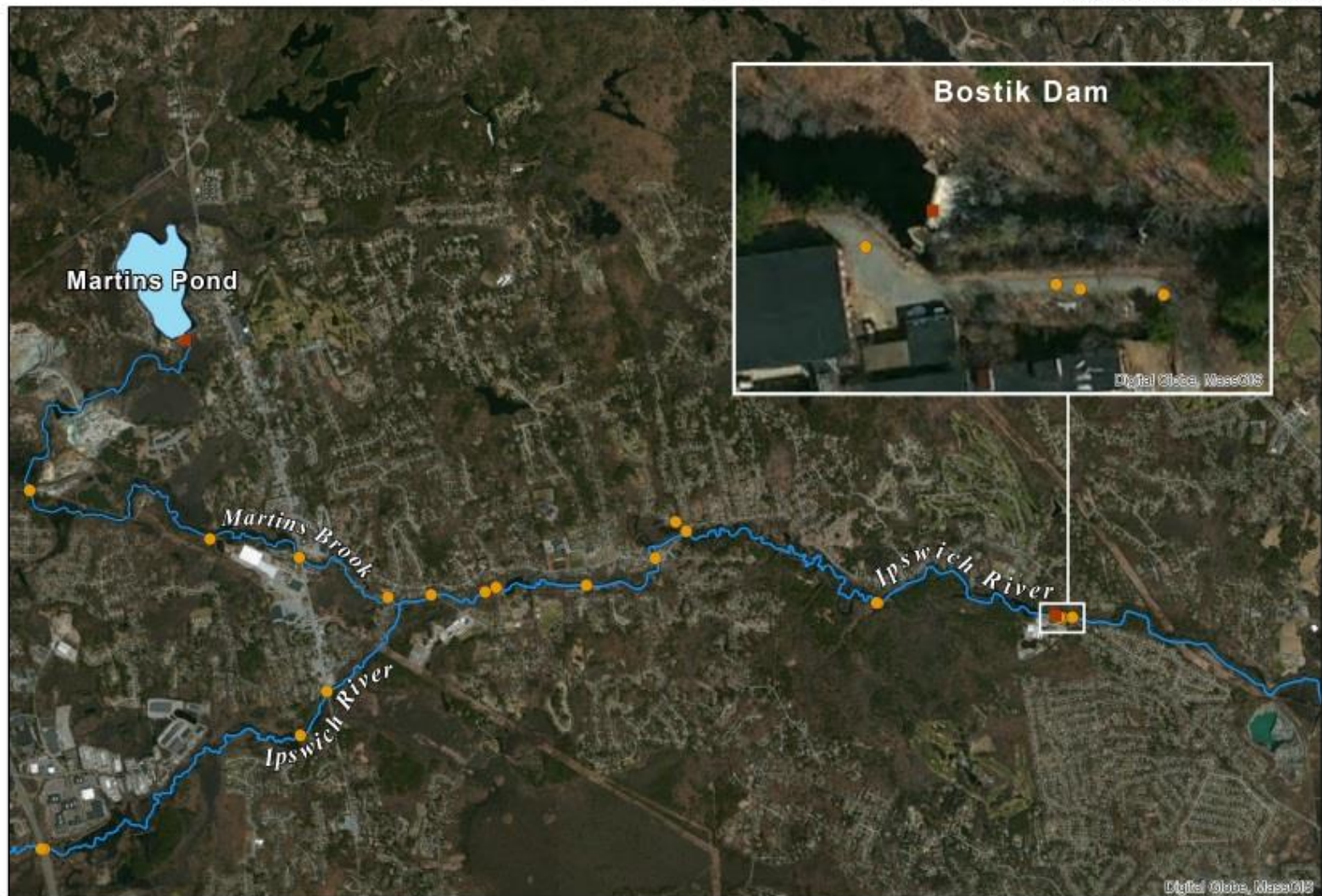
Source: Mass GIS

From Four Mile Pond to Ipswich River



From Martins Pond to Ipswich River

Author: Kristen Thiebault 3/1/18



Barrier Type

- Orange square: Dams without Fish Ladders
- Yellow circle: Crossings

0 1 2 Miles



Source: Mass GIS

Planned and Active Restoration Activities

- In 2021, stocked herring in Hood Pond and the Ipswich River in Topsfield!
- Plans to Install a new fish ladder on the Willowdale Dam summer 2022
- Plans to repair and old fish ladder on the Howlett Dam.



- Replace the culvert at Pond St. (the outlet of Hood Pond).

Ipswich Mills Dam Project

- Two grant projects
 - Develop a monitoring system for the EBSCO facility to study building movement and possible mitigation plans.
 - Develop permit ready designs and analysis of post dam removal water levels
 - Get the town to hold a deciding vote on dam removal this summer.

FISH CAMERA



Run Size Estimates

